



A T E N Z Z A

Outdoor Collection

# SWIMMING - SWIMMING WP - VELVET



Blanco



Crudo



Vainilla



Canela



Lino



Cuero



Amarillo



Teja



Butano



Rojo



Granate



Azul Royal



Zafiro



Navy



Manzana



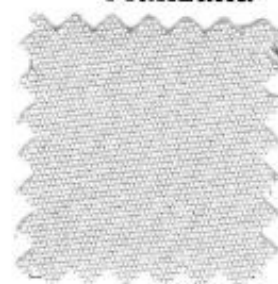
Pistacno



Verde Billar



Verde Oscuro



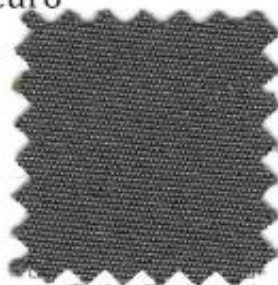
Silver



Gris Claro



Topo

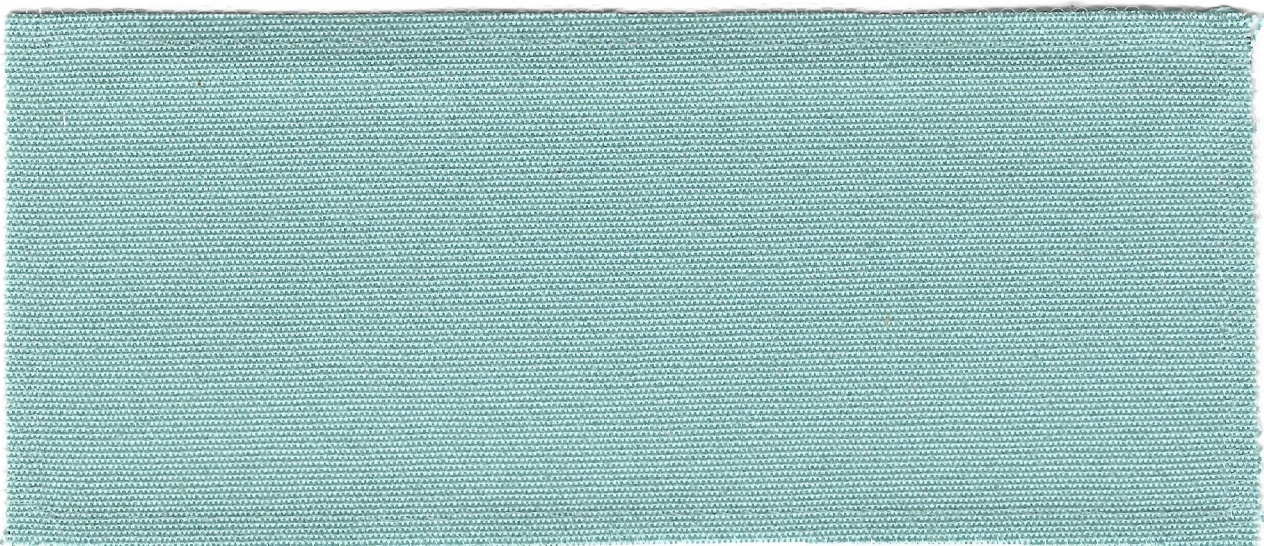


Gris Oscuro

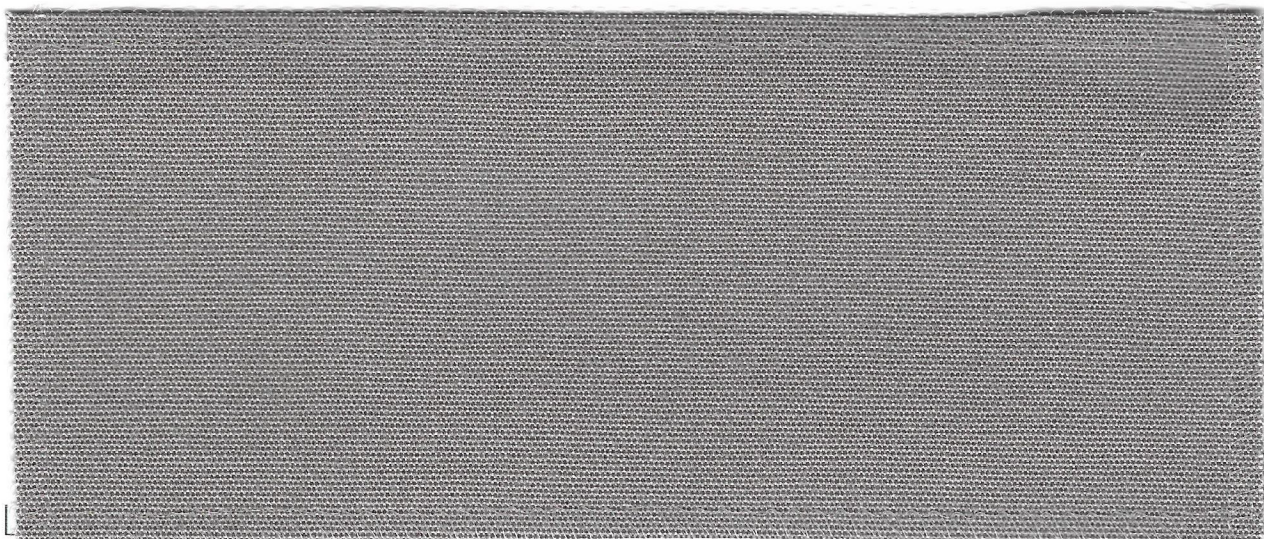


Negro

# MUESTRAS DE CALIDAD



Swimming - Disponible en todos los colores



Swimming WP - Disponible en todos los colores menos en blanco

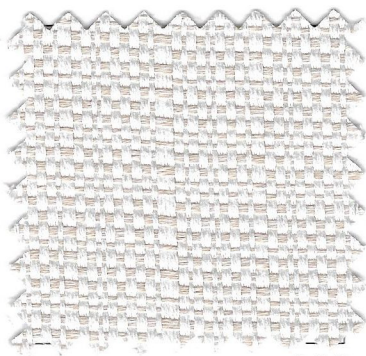


Velvet - Disponible en todos los colores menos en blanco

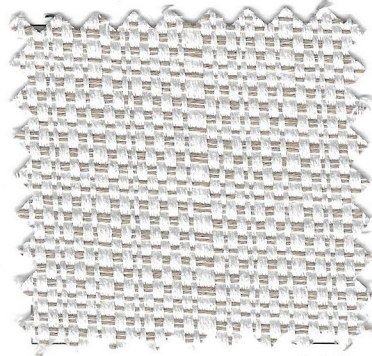
# HUGO



001



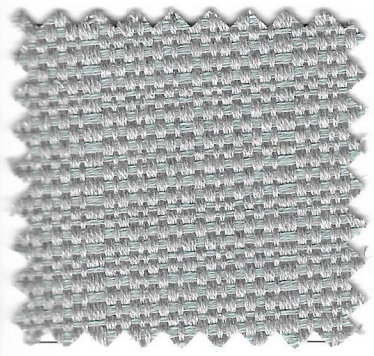
002



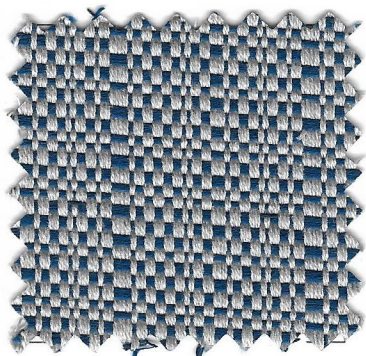
003



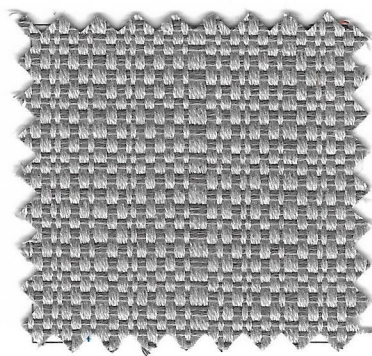
004



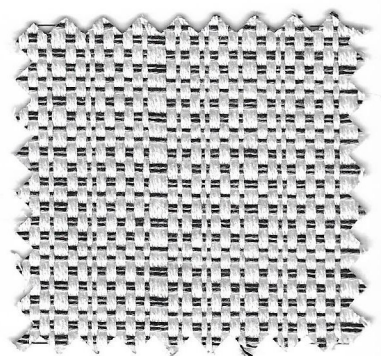
011



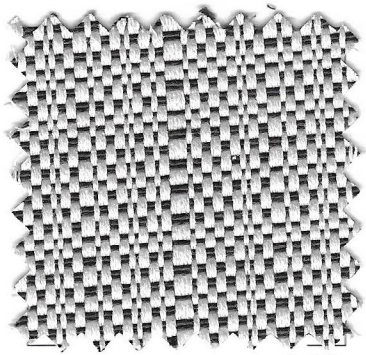
015



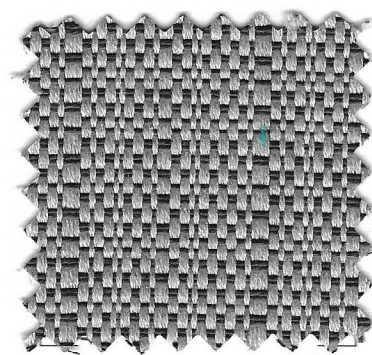
017



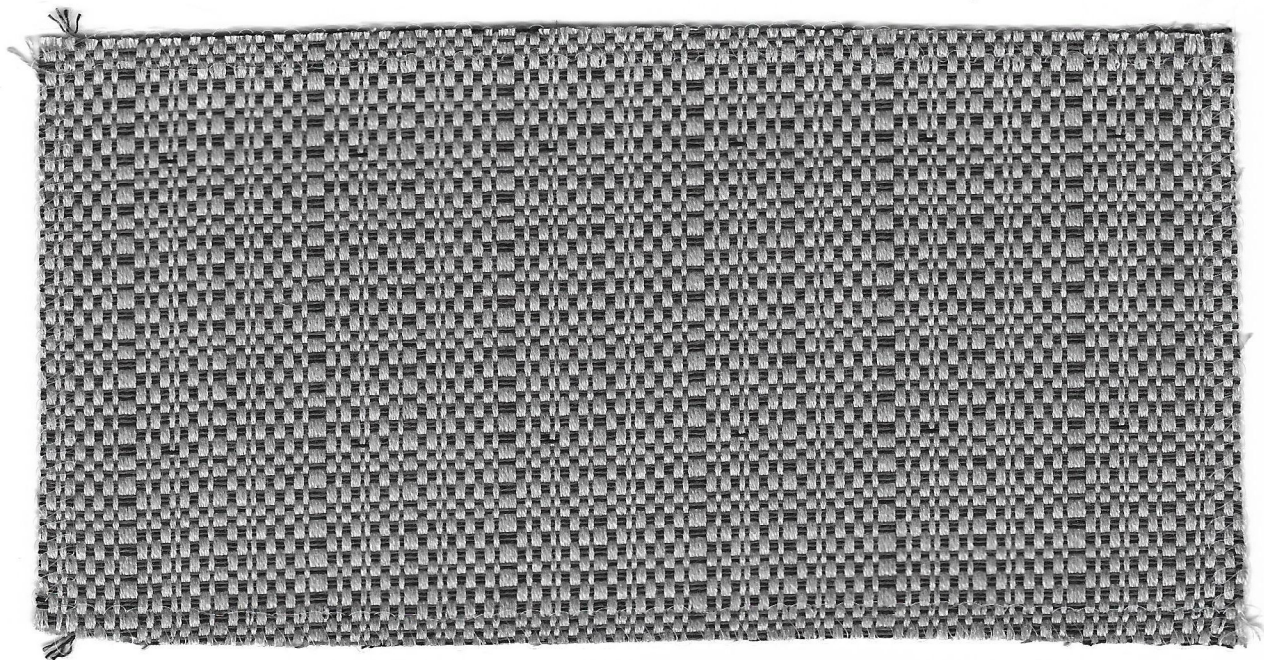
018



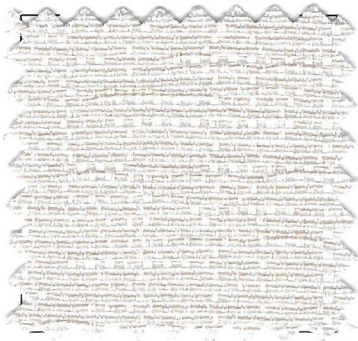
019



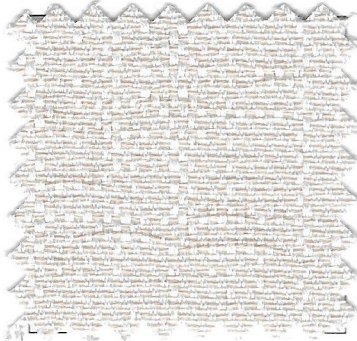
020



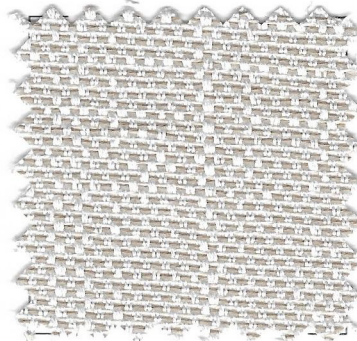
# XENÓN



001



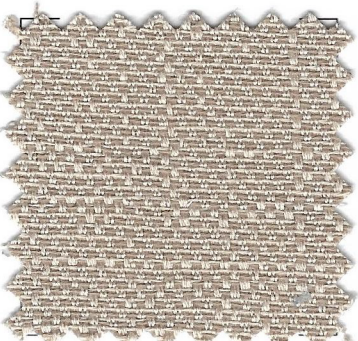
002



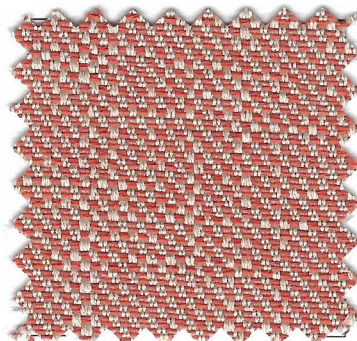
003



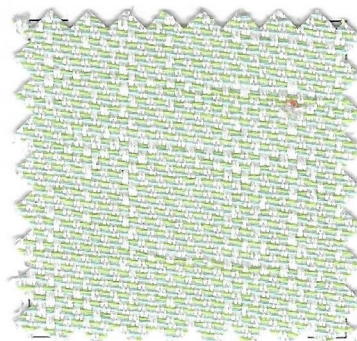
004



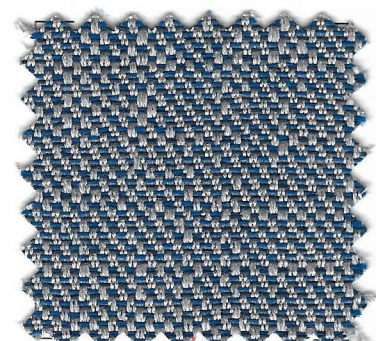
005



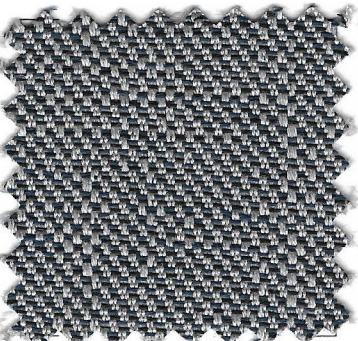
010



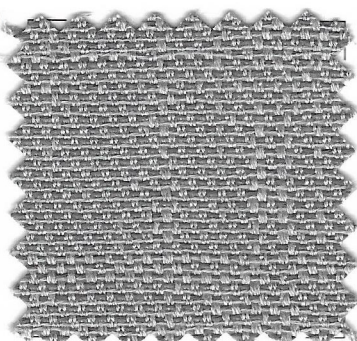
013



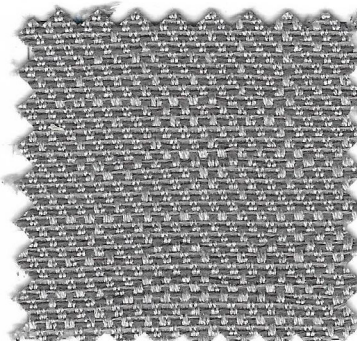
016



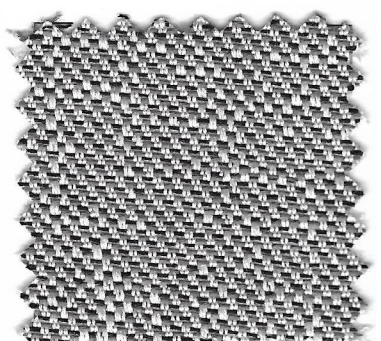
017



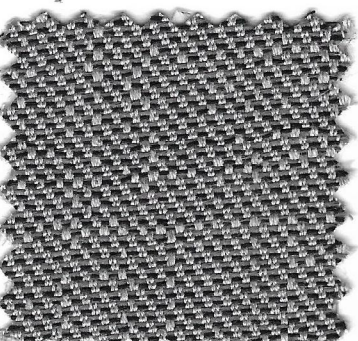
018



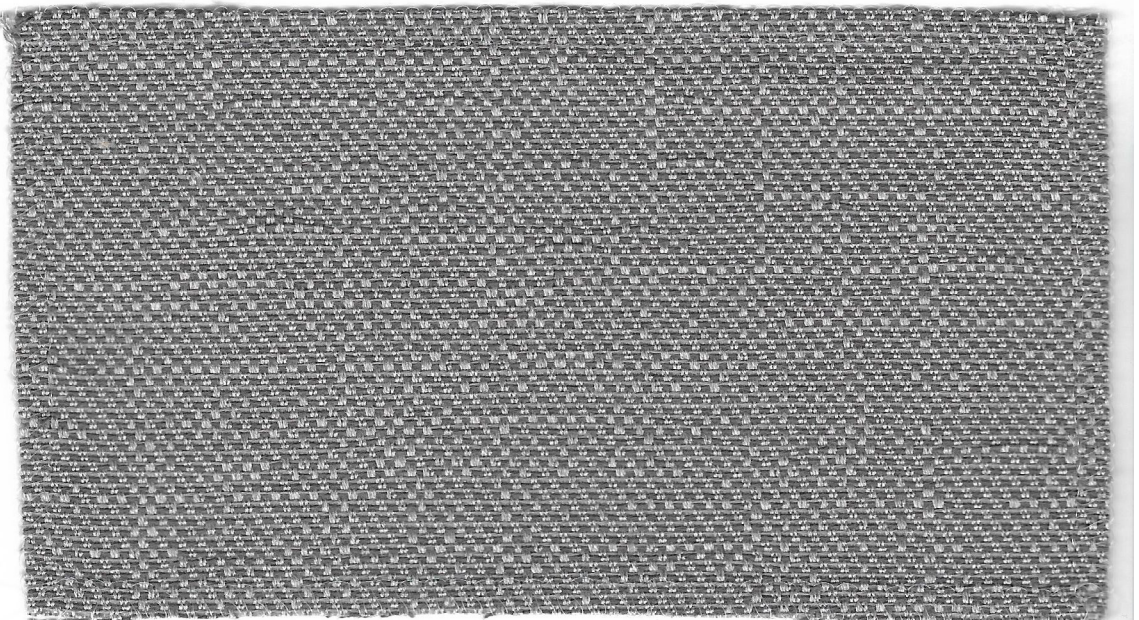
019



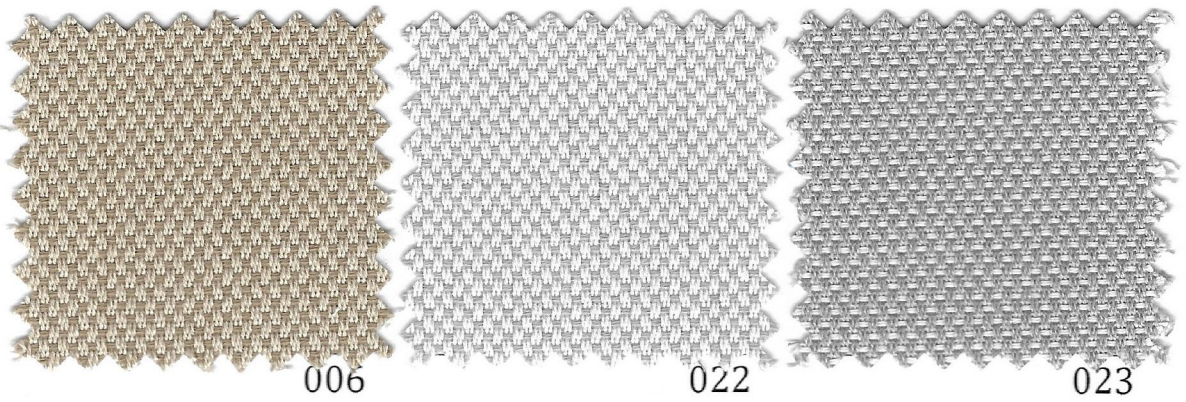
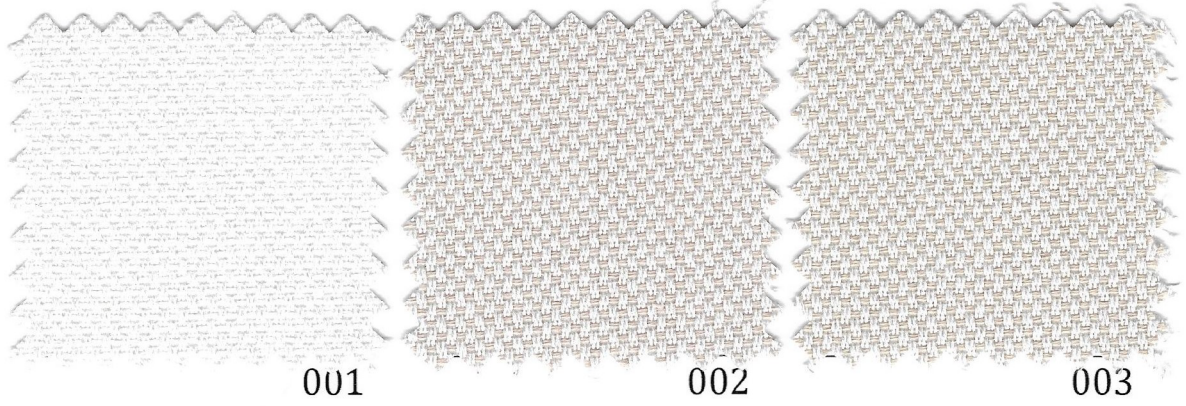
020



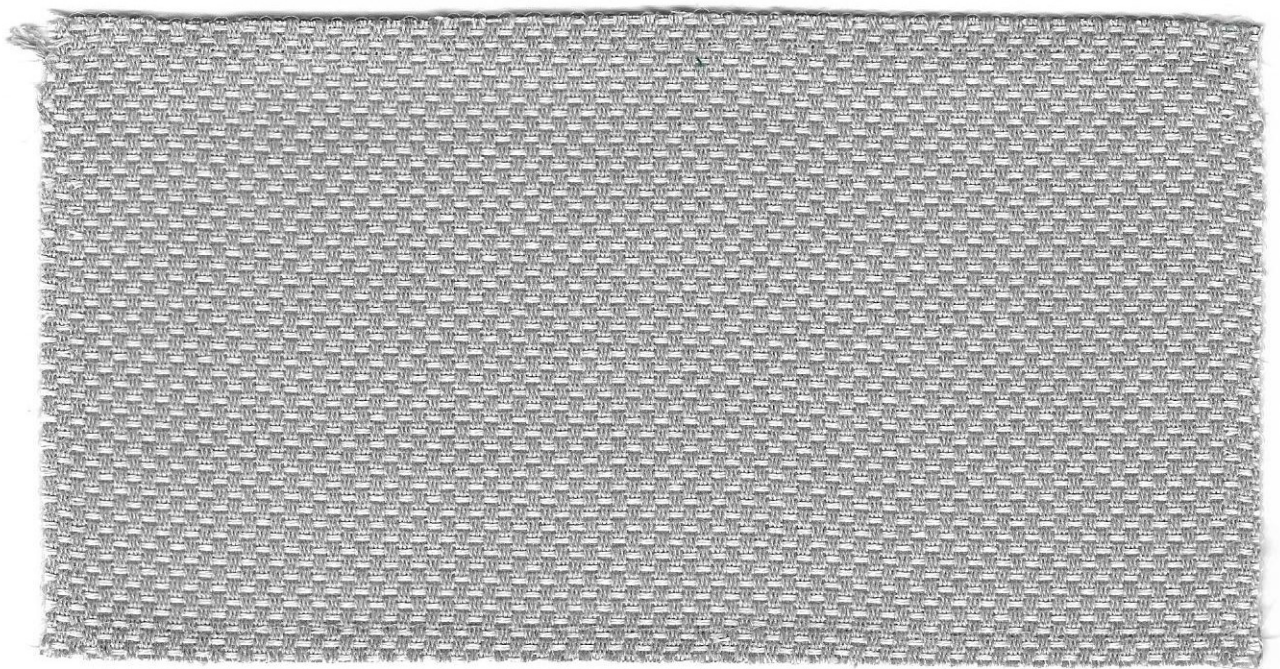
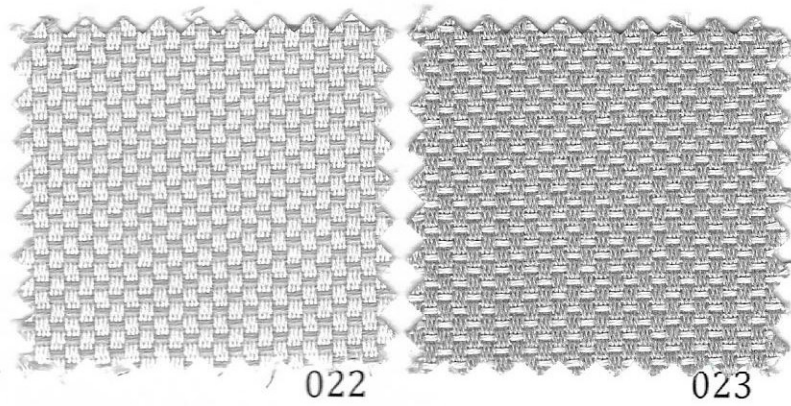
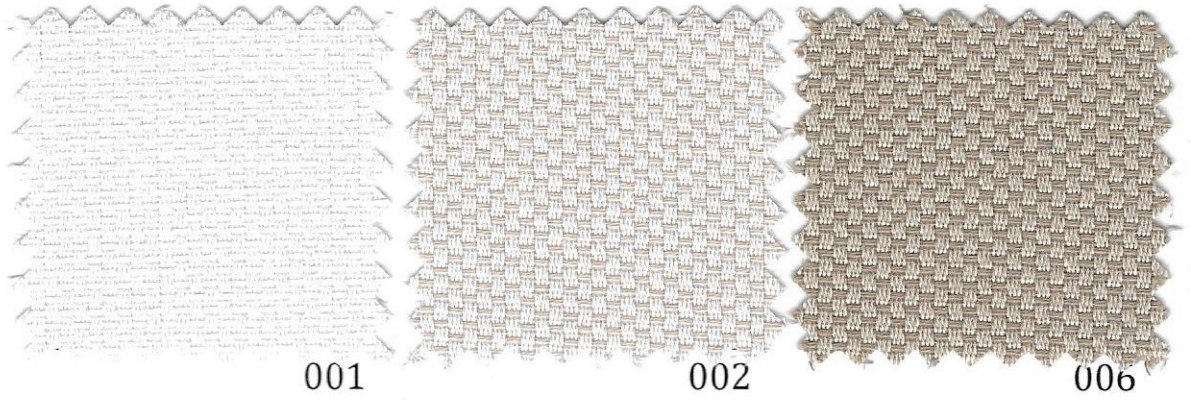
021



# CÓRCEGA



# CÍES



Mantenimiento Fácil	Easy Care
<b>Ref: Swimming + Velvet (Acabado Especial)</b> <b>Hilo:</b> 100% Acrílico <b>Peso x m<sup>2</sup>:</b> 220gr <b>Urdimbre:</b> 31 Hilo x cm NM 2/40.000 <b>Trama:</b> 11 Pasadas x cm NM 2/40.000	<b>Ref: Swimming + Velvet (Special finishing)</b> <b>Yarn:</b> 100% Acrylic <b>Wight x m2:</b> 220 gr <b>Warp:</b> 31 yarns x cm NM 2/40.000 <b>Weft:</b> 11 yarns x cm NM 2/40.000
<b>Ref: Swimming 100% Waterproof</b> <b>Hilo:</b> 100% Acrílico <b>Peso x m<sup>2</sup>:</b> 275 gr <b>Urdimbre:</b> 31 Hilo x cm NM 2/40.000 <b>Trama:</b> 11 Pasadas x cm NM 2/40.000 <b>Laminado PU 100% Impermeable</b>	<b>Ref: Swimming 100% waterproof</b> <b>Yarn:</b> 100% Acrylic <b>Wight x m2:</b> 275 gr <b>Warp:</b> 31 yarns x cm NM 2/40.000 <b>Weft:</b> 11 yarns x cm NM 2/40.000 <b>PU Laminated 100% Waterproof</b>
<b>Ref: Hugo + Xenon + Córcega + Cies</b> <b>Hilo:</b> 100 % Acrílico <b>Peso x m<sup>2</sup>:</b> 275gr <b>Urdimbre:</b> 31 Hilo x cm NM 2/40.000 <b>Trama:</b> 17 Pasadas x cm NM 2/40.000 Acrílico	<b>Ref: Hugo + Xenon + Corcega + Cies</b> <b>Yarn:</b> 100% Acrylic <b>Wight x m2:</b> 275 gr <b>Warp:</b> 31 yarns x cm NM 2/40.000 <b>Weft:</b> 17 yarns x cm NM 2/40.000 Acrylic
<b>Acabado de los tejidos</b> Repelente al Agua Anti-Bacterias, Anti-Moho <b>Waterproof Film PU 100% impermeable</b>	<b>Finishing of the fabrics</b> Water Repellent Anti-Bacterial, Anti-Mold <b>Waterproof PU Film 100% Waterproof</b>

Análisis / Analysis	
<b>Ancho Pieza</b> <b>Width of Roll</b>	150 cm
<b>Largo Pieza</b> <b>Length of roll</b>	50 cm
<b>Repelencia al Aceite: 6 sobre un máximo de 8</b> <b>Oil repellence: 6 over a maximum of 8</b> <b>UNE-ISO14419: 2010</b>	
<b>Repelencia al Agua Método: 10 sobre un máximo de 10</b> <b>Water Repellence: 10 over a maximum of 10</b> <b>M test II</b>	
<b>Solidez del Color al Agua clorada (100 mg x litro): 5 sobre un máximo de 5</b> <b>Colour fastness to Chloride water (100mg x litre): 5 over a maximum of 5</b> <b>UNE EN ISO 105 E-03</b>	
<b>Solidez del Color al Agua de Mar: 5 sobre un máximo de 5</b> <b>Colour fastness to Sea Water: 5 over a maximum of 5</b> <b>UNE EN ISO 105 E-02</b>	
<b>Solidez de las texturas a la luz:</b> 7/8 sobre un máximo de 8 (escala de azules) 4/5 Sobre un máximo de 5 (escala de grises) <b>Colour fastness to light:</b> 7/8 over a maximum of 8 (blue scale) 4/5 over a maximum of 5 (grey scale) <b>UNE EN ISO 105 B-02</b>	

ATENZZA FABRICS MEXICO

José Palomar - 80 Z  
 Colonia El Retiro, CP. 44280 Guadalajara  
 Jalisco – México

Tel: +52 331 971 5450  
 Mail: info@atenzza.com.mx