

# ATENZZA

Mantenimiento Fácil/Easy Care



ESTAMPADO/PRINTED

**Hilo / Yarn** 100% Fibra acrílica 100% Dralon®  
100 % Acrylic Fibre 100% Dralon®

220 g/m<sup>2</sup>: **Urdimbre / Warp** 31 hilos x cm Nm 2/40.000  
**Trama / Weave** 11 pasadas x cm Nm 2/40.000

**Acabado / Finish** Repelente al agua / Water - repellent  
Especial HQ Anti bacterias / Anti  
manchas / Anti moho  
Special HQ Anti bacterias / Anti  
stain / Anti mildew

**Ancho / Width** 150 cm / 59" ± 1%

**Largo pieza / length of roll** 50 m / 65,64 yds

**Peso / Weight m<sup>2</sup>** 220 g / m<sup>2</sup> ± 5%

\*UNE 53352

**Columna hidrófuga /**  
Waterproof column 150 mm

Resistencia a la tracción  
y alargamiento a la rotura

Determination of breakings  
Strength and elongation

Longitudinal/ Lengthwise	Fuerza máxima (N)/ Max average load (N) 1600	Alargamiento a la fuerza max (%) Average elongation (%) 28,5%
Transversal/ Crosswise	580	19,5%

\*UNE EN ISO 13934 - 1 :2013

**Solidez del color a la luz /**  
Colour Fastness to light

Grado/Grade  
7/8-8 Escala Azules / Blue Scale

 dralon®

  
**CONFIDENCE  
IN TEXTILES**  
Tested for harmful substances  
according to Oeko-Tex® Standard 100  
SHAO 095780 TESTEX

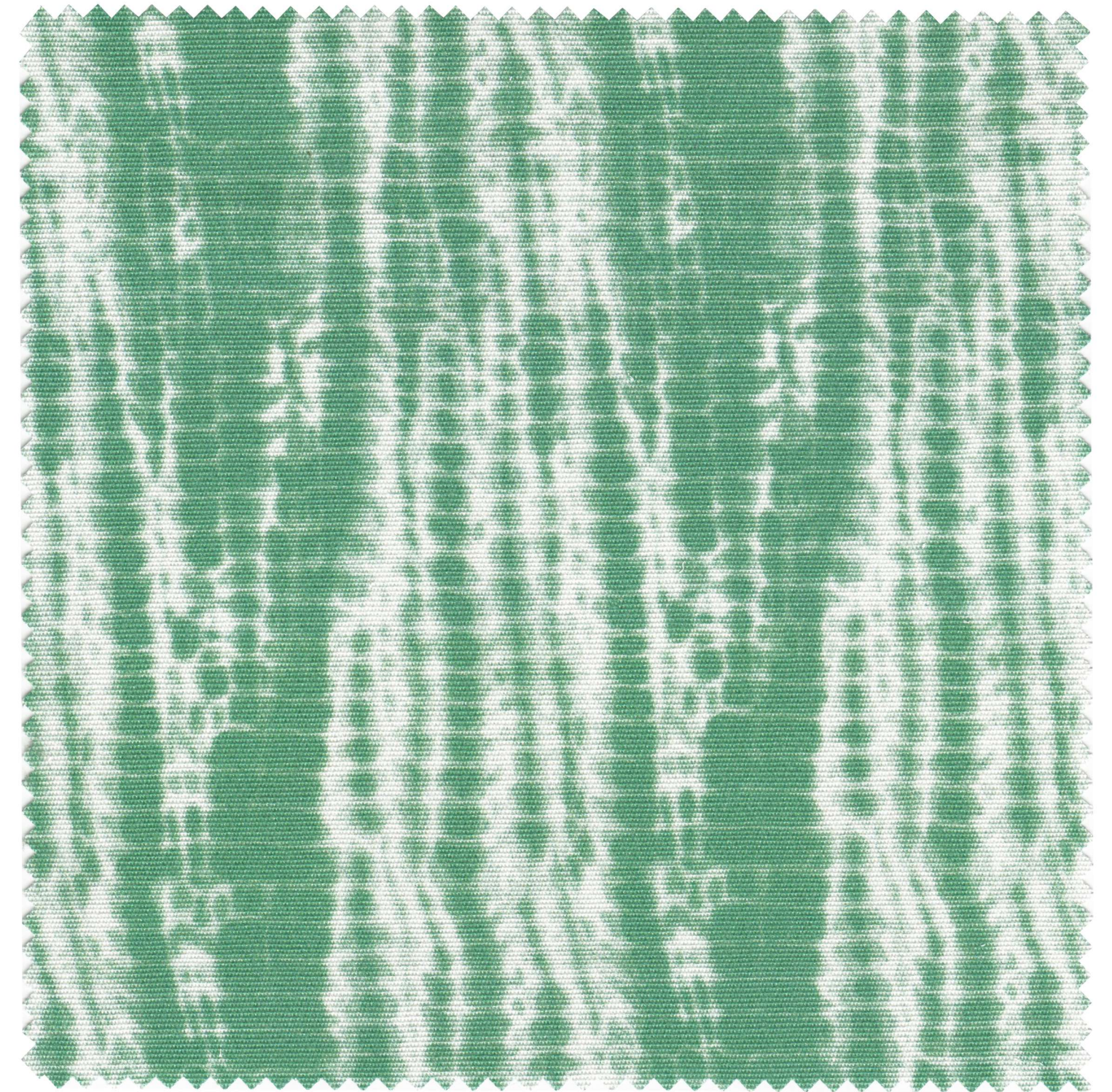


Fabricado en España  
Made in Spain

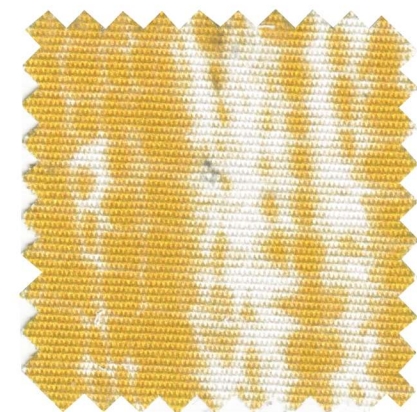
**YUKI**



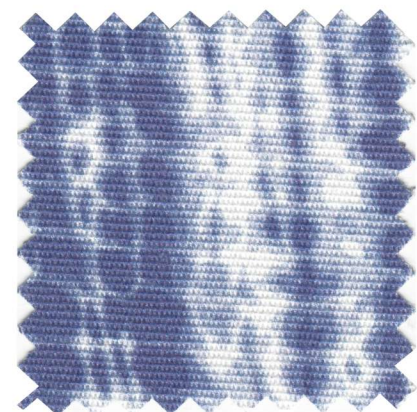
# YUKI



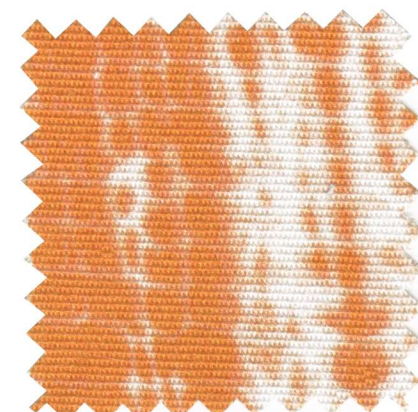
MANZANA



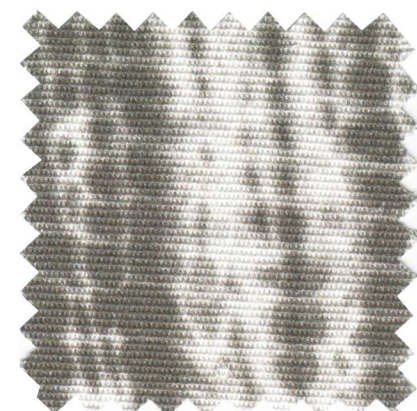
AMARILLO



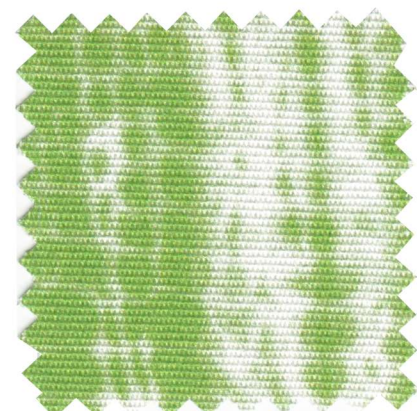
AZUL ROYAL



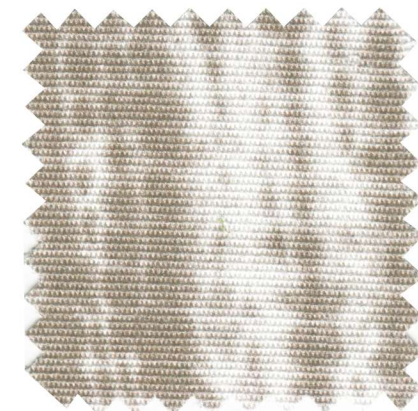
BUTANO



GRIS



PISTACHO



TOPO

