

ATENZZA

Mantenimiento Fácil/Easy Care



ESTAMPADO/PRINTED

Hilo / Yarn 100% Fibra acrílica 100% Dralon®
100 % Acrylic Fibre 100% Dralon®

220 g/m²: **Urdimbre / Warp** 31 hilos x cm Nm 2/40.000
Trama / Weave 11 pasadas x cm Nm 2/40.000

Acabado / Finish

Repelente al agua / Water - repellent
Especial HQ Anti bacterias / Anti
manchas / Anti moho
Special HQ Anti bacterias / Anti
stain / Anti mildew

Ancho / Width 150 cm / 59" ± 1%

Largo pieza / length of roll 50 m / 65,64 yds

Peso / Weight m² 220 g / m² ± 5%

*UNE 53352

Columna hidrófuga /
Waterproof column 150 mm

Resistencia a la tracción
y alargamiento a la rotura

Determination of breakings
Strength and elongation

Longitudinal/ Lengthwise	Fuerza máxima (N)/ Max average load (N) 1600	Alargamiento a la fuerza max (%) Average elongation (%) 28,5%
Transversal/ Crosswise	580	19,5%

*UNE EN ISO 13934 - 1 :2013

Solidez del color a la luz /
Colour Fastness to light

Grado/Grade
7/8-8 Escala Azules / Blue Scale

 dralon®


**CONFIDENCE
IN TEXTILES**
Tested for harmful substances
according to Oeko-Tex® Standard 100
SHAO 095780 TESTEX



Fabricado en España
Made in Spain

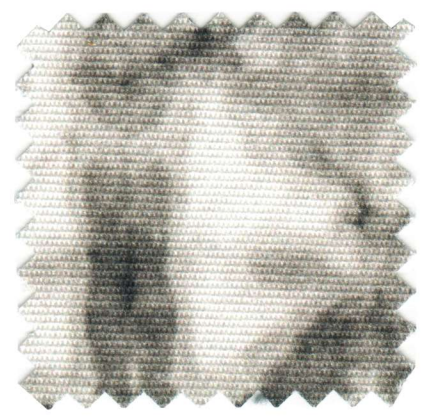


NUI

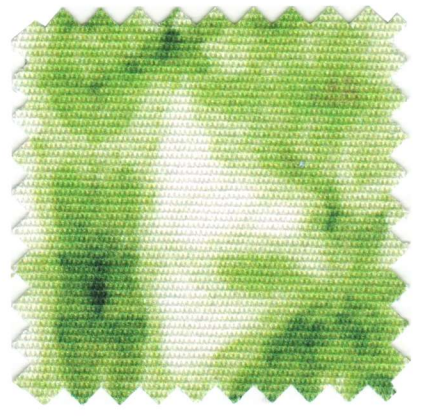
NUI



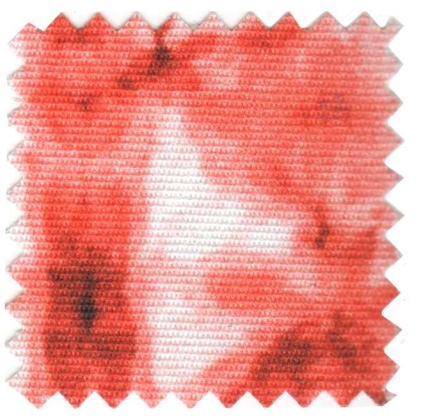
AZUL



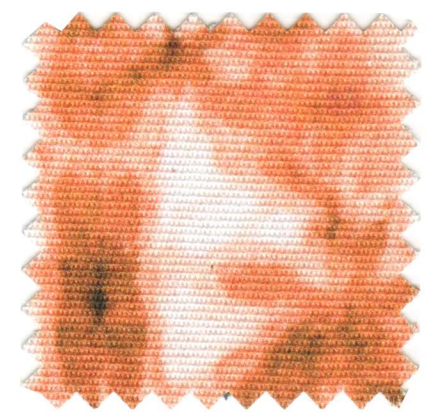
GRIS



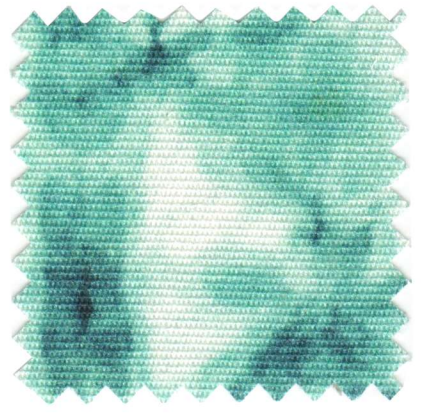
PISTACHO



ROJO



TEJA



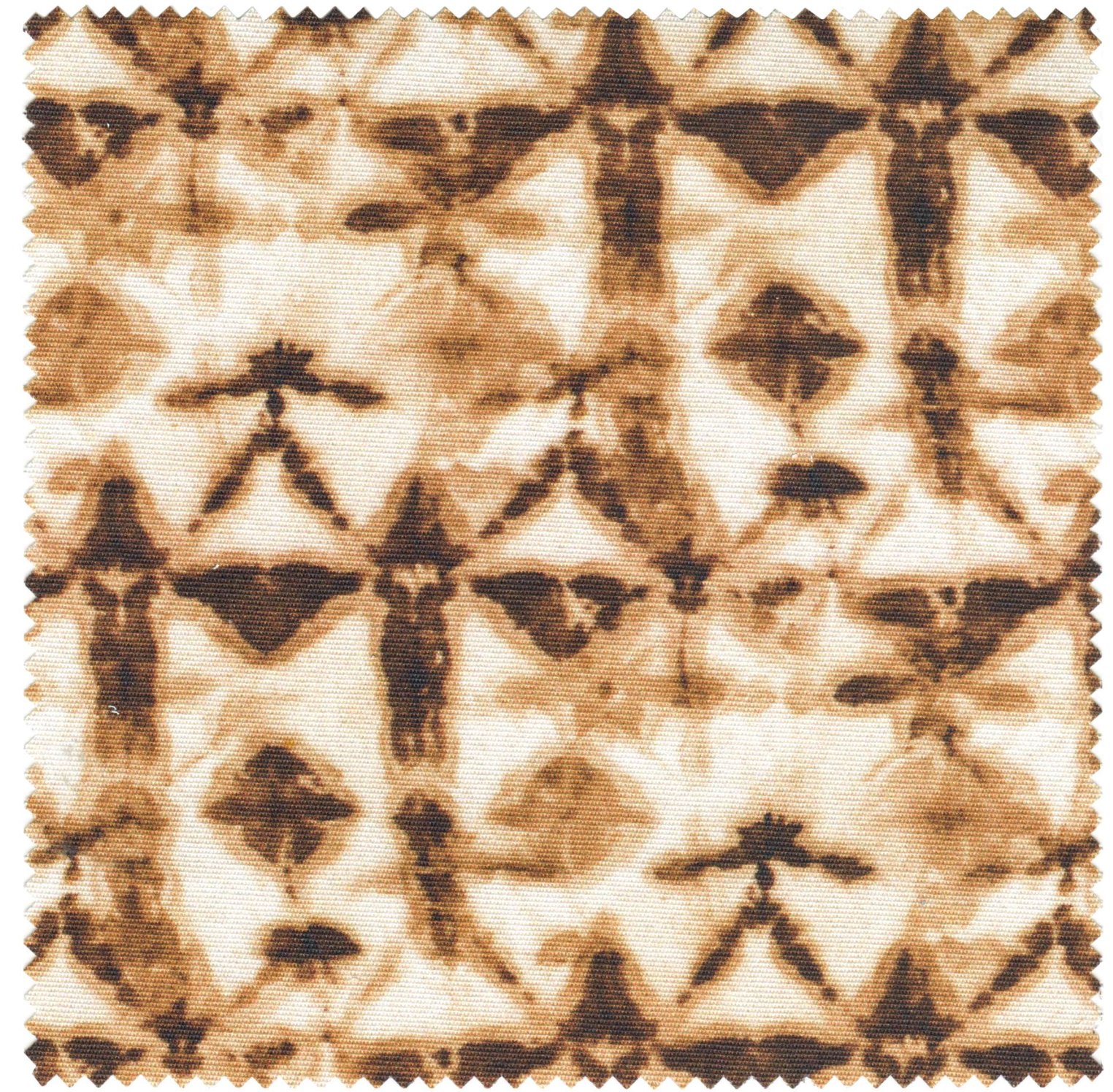
TURQUESA



VERDE



TOPO



TOPO

